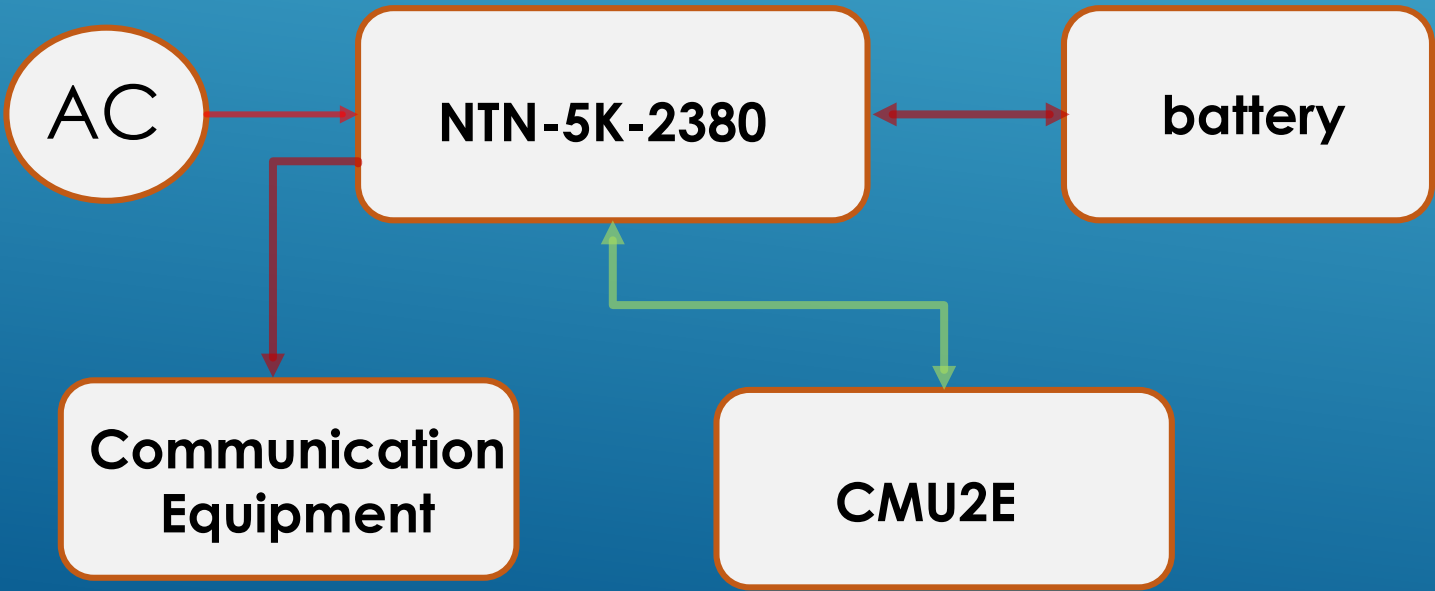
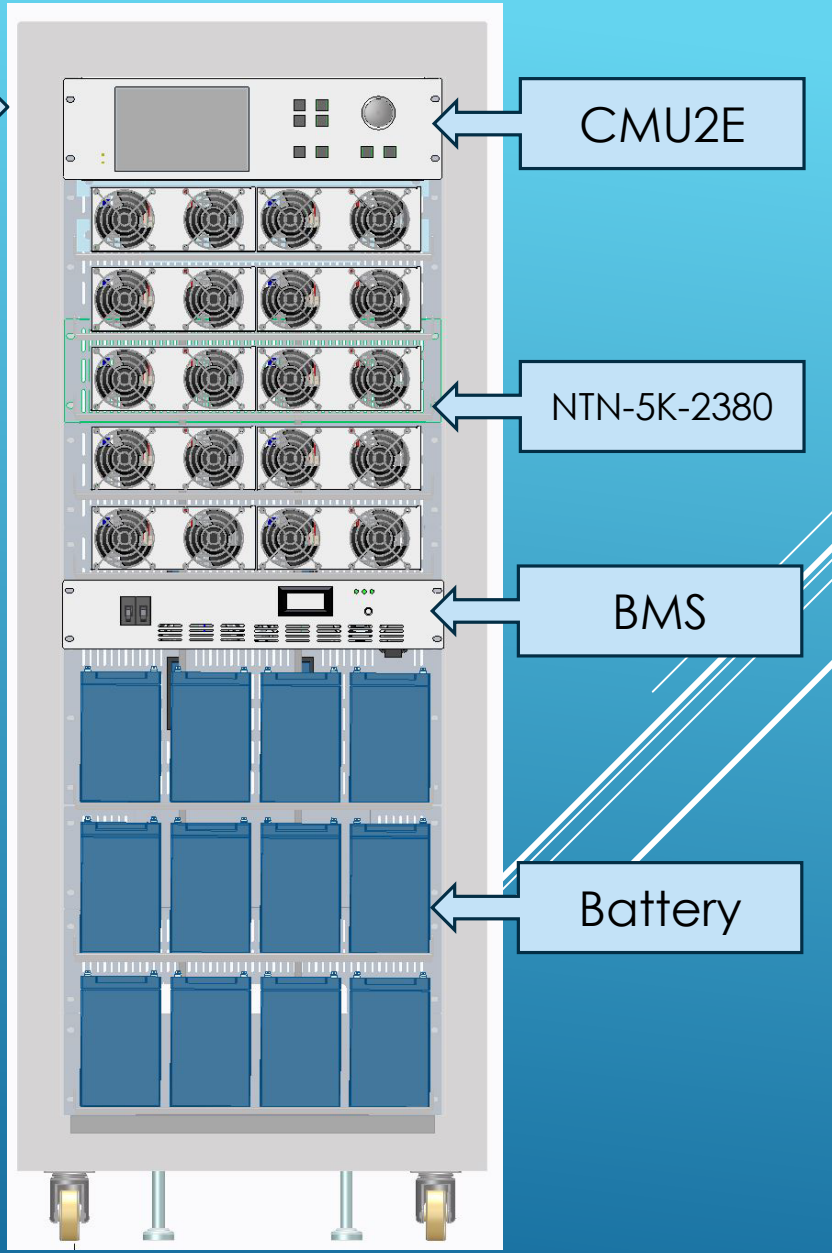


UPS SYSTEM OF COMMUNICATION EQUIPMENT

- **Application** : UPS System
- **PSU/Model** : NTN-5K-2380 (under development)
- **System Voltage** : 380VDC
- **Control Interface** : PMBus/CAN Bus

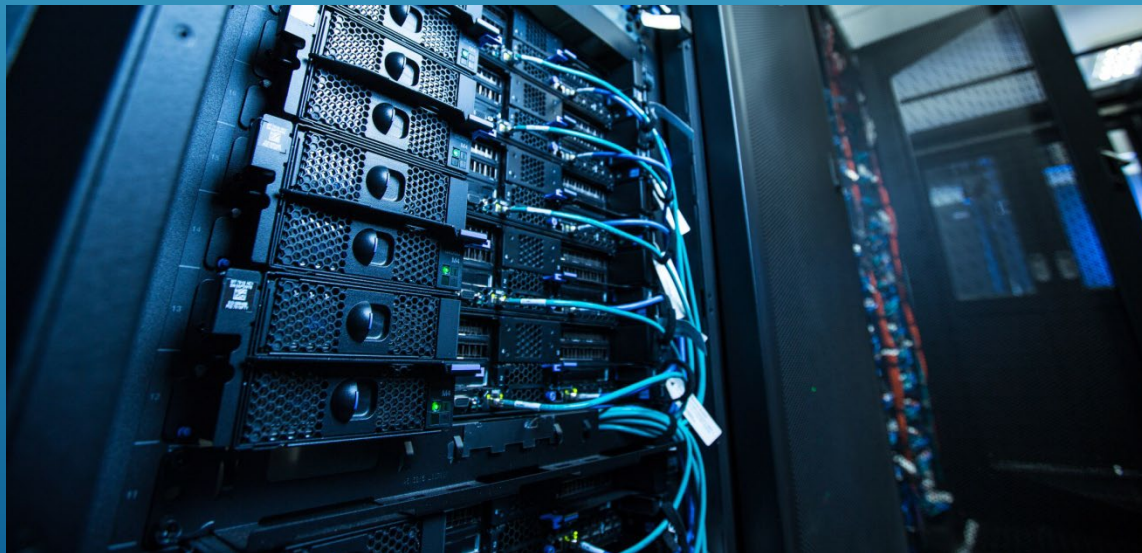
19" Cabinet



UPS SYSTEM OF COMMUNICATION EQUIPMENT

UPS system provides power regulation and backup AC power when the power grid is abnormal. The time is long enough for important equipment to shut down normally, maintaining the necessary load of electrical appliances to continue operating, and preventing the loss of important data or business losses.

MEAN WELL's UPS system uses NTN-5K-2380 bidirectional inverter to provide a solution in conjunction with the battery. Under normal conditions, AC BYPASS directly supplies power to the system and charges the battery. When the mains power is abnormal, the battery directly Reverse electrical appliances for backup



UPS SYSTEM OF COMMUNICATION EQUIPMENT

Key Features :

- The mechanism design of NTN-5000 is very suitable for configuration in a 19" cabinet.
- NTN-5000 adopts a bidirectional design and can perform high-current fast charging.
- CMU2E controller can be used to cooperate with the inverter to achieve remote control or on-site control.
- The product has high efficiency and can extend the backup time.
- Conversion time <10ms, improving backup reliability.
- The product has UPS mode and energy-saving mode setting options, which can be activated according to actual needs.

UPS mode: Mains power priority, main purpose is backup.

Energy saving mode: Battery priority, main purpose is energy saving.