

# Energy Recycling Burn-in System

Controller : CMU2A \* 7pcs

Load : ERG-5000 \* 108pcs

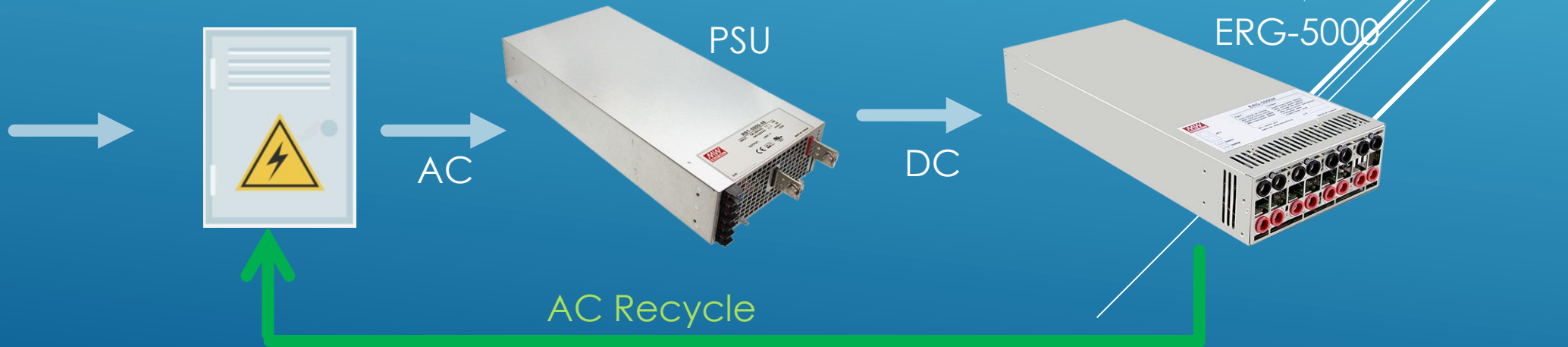
Voltage range for production : 10~60VDC

60~420VDC for H type

Max. input power & current : Rated 1250W /Max. 1500W\* 4 channel

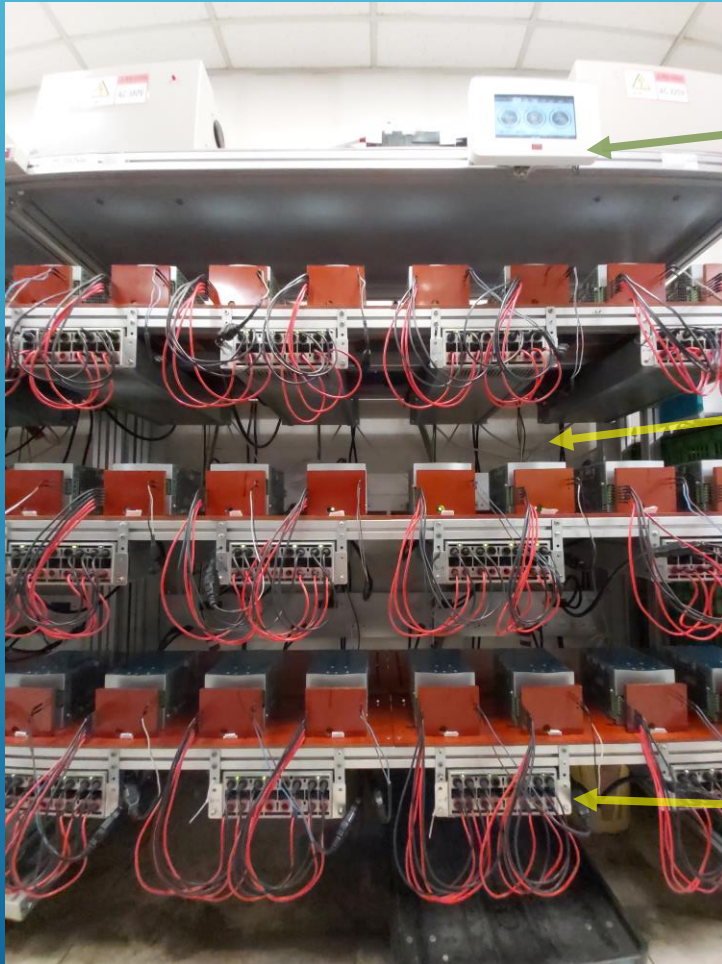
Rated 125A \* 4 channel

Rated 25A \* 4 channel for H type

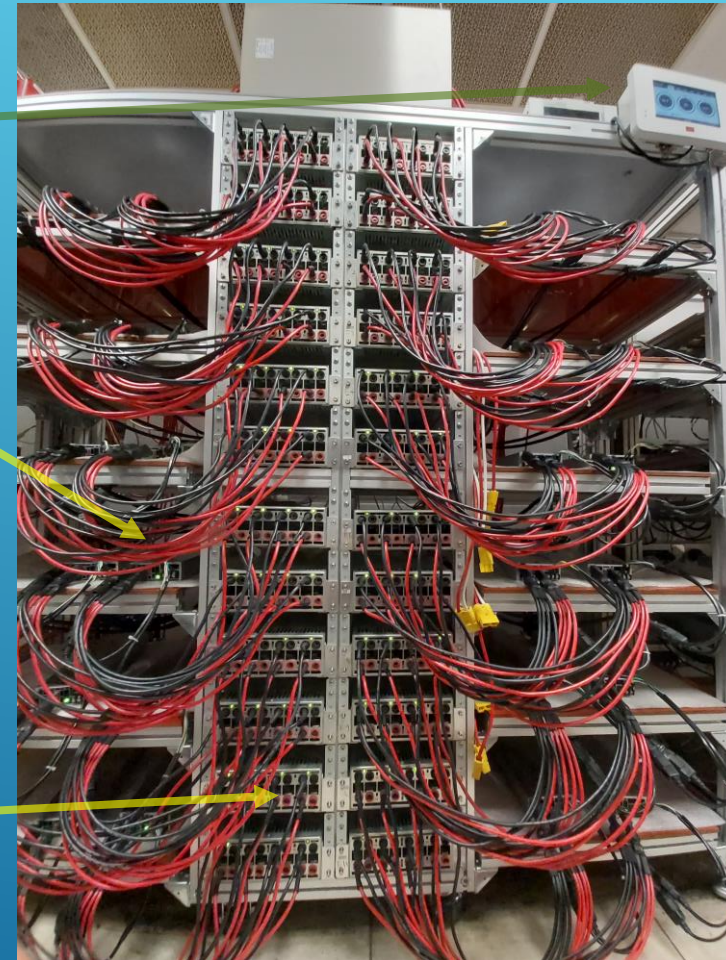


# Energy Recycling Burn-in System

Design Type : DISTRIBUTION TYPE\* 5pcs (PSU<5000W);CENTRALIZED TYPE\* 2 (PSU≥5000W)  
Recycling rate for system : 79.62%



DISTRIBUTION TYPE  
ERG-5000 \* 12PCS



CENTRALIZED TYPE /RACK TYPE  
ERG-5000 \* 24PCS

# Energy Recycling Burn-in System

advantages and disadvantages of different type

Type	Advantages	Disadvantages
DISTRIBUTION	<ul style="list-style-type: none"> <li>• Flexible use of space</li> <li>• Low cost</li> </ul>	Only suitable for low weight and low power products
CENTRALIZED TYPE RACK TYPE	<ul style="list-style-type: none"> <li>• Better work efficiency with trolley design</li> <li>• Easy connection with high power products</li> </ul>	<ul style="list-style-type: none"> <li>• higher cost</li> <li>• Limited of space</li> </ul>

suggestions with PSU power range

Power range(W)	Recommended	Number of channel(1500W/CH)
500~1500	DISTRIBUTION	1
1501~3000		2
3001~5000		4
5001~7500	CENTRALIZED TYPE RACK TYPE	6
7501~10000		8
10000<		8<